

Cheoah River Non-Native Invasive Plant Control Project



Cheoah River Non-Native Invasive Plant Control Project

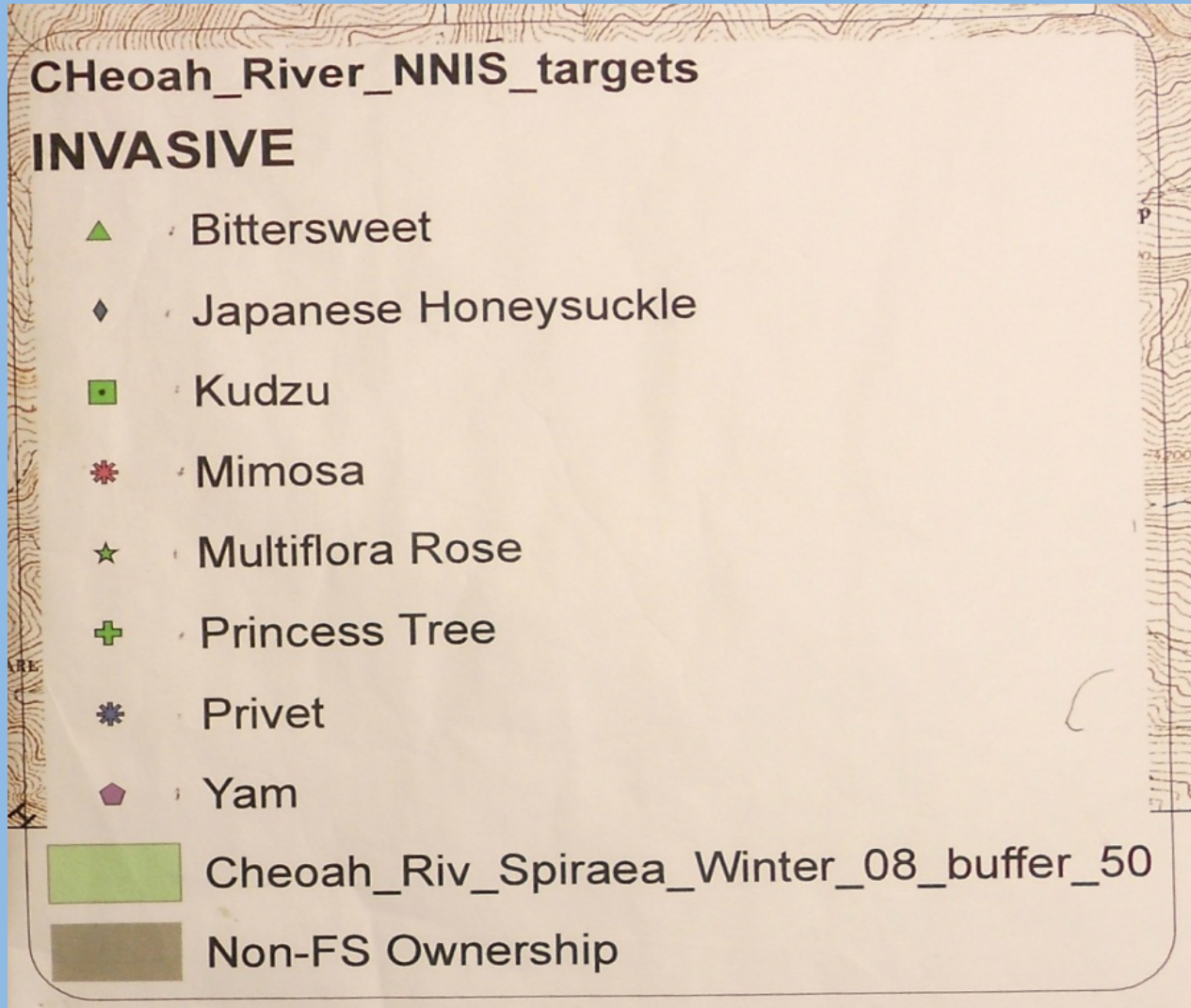


Virginia Spiraea (*Spiraea virginiana*)

Cheoah River

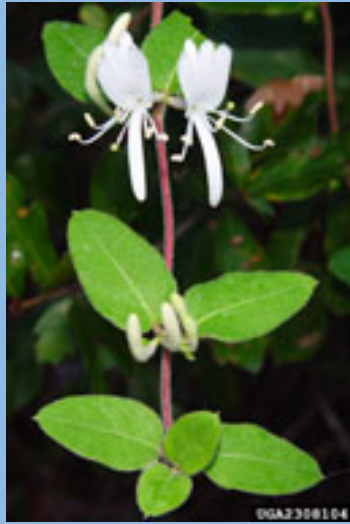


Cheoah Invasive Species



Cheoah Invasive Species



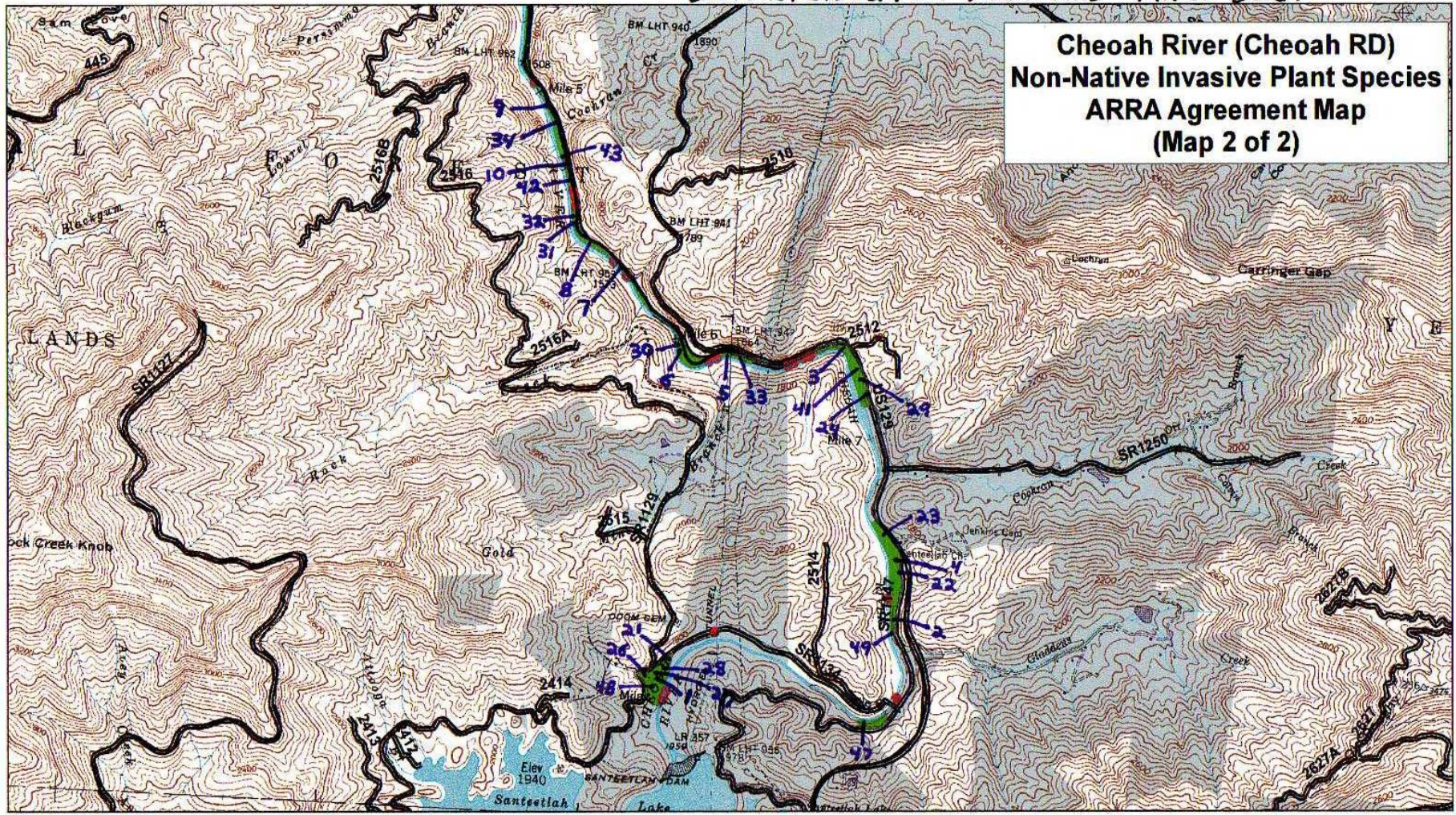


Cheoah River Non-Native Invasive Plant Control Project

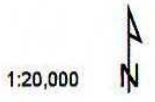
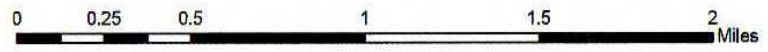
- American Recovery & Reinvestment Act
- USDA Forest Service – National Forests in North Carolina
- Western North Carolina Alliance
- Eastern Band Cherokee Indians
- NC Department of Transportation

Established Plot Locations - River East

**Cheoah River (Cheoah RD)
Non-Native Invasive Plant Species
ARRA Agreement Map
(Map 2 of 2)**

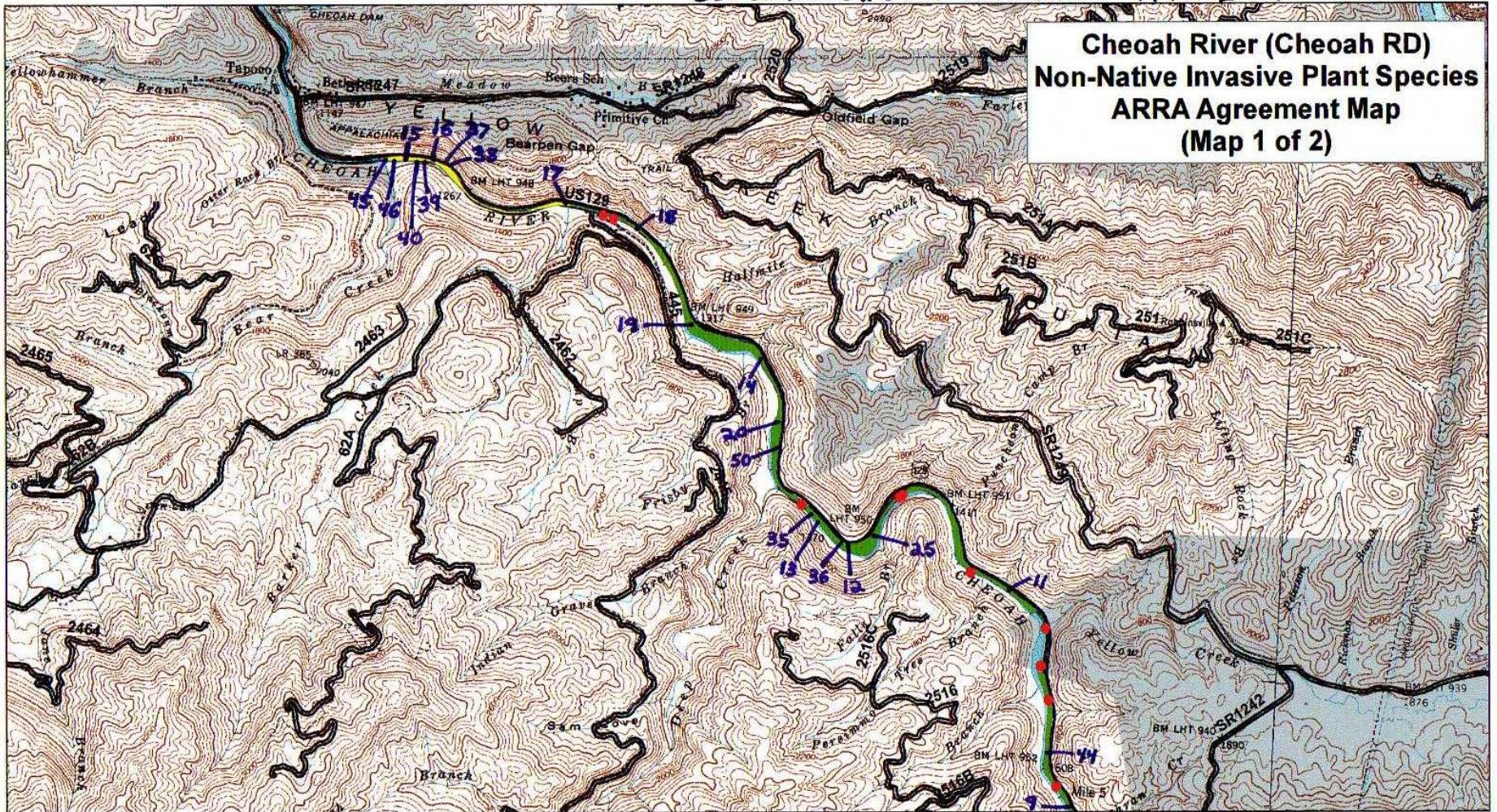


-  WNCA/EBCI NNIS Treatment Areas (74 ac)
-  NCDOT Kudzu Treatment Areas (5 ac)
-  Non-FS Ownership

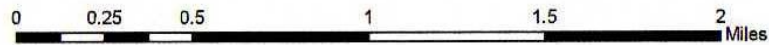


Established Plot Locations - River East

**Cheoah River (Cheoah RD)
Non-Native Invasive Plant Species
ARRA Agreement Map
(Map 1 of 2)**



-  WNCA/EBCI NNIS Treatment Areas (74 ac)
-  NCDOT Kudzu Treatment Areas (5 ac)
-  Non-FS Ownership



Monitoring Plots



Cheoah Invasives Team



**Cheoah River Non-Native Invasive Plant Control Project
River East 1/100th Acre Plot Monitoring Data:**

2009 Pre-Treatment

Species Code	Scientific Name
ALJU	<i>Albizia julbrissin</i>
CEOR	<i>Celastrus orbiculatus</i>
DIOP	<i>Dioscorea polystachya</i>
LIS/V	<i>Ligustrum sinense/vulgare</i>
LOJA	<i>Lonicera japonica</i>
PATO	<i>Paulownia tomentosa</i>
PULO	<i>Pueraria montana var. lobata</i>
ROMU	<i>Rosa multiflora</i>

Date	Plot No.	Latitude	Longitude	Stems	Sq Ft	Sq Ft	Sq Ft	Sq Ft	Stems	Sq Ft	Sq Ft
				ALJU	CEOR	DIOP	LIS/V	LOJA	PATO	PULO	ROMU
10/5/2009	1	N 35.38106°	W 083.87838°	0	65.4	0	0	22	0	0	0
10/5/2009	2	N 35.38472°	W 083.86370°	8	0	0	13.1	0	0	0	65.4
10/5/2009	3	N 35.39883°	W 083.86760°	0	0	0	131	349	0	0	22
10/6/2009	4	N 35.38847°	W 083.86375°	2	0	0	0	0	0	0	9
10/6/2009	5	N 35.39823°	W 083.87545°	0	0	0	0	0	4	0	0
10/6/2009	6	N 35.39840°	W 083.87795°	0	0	0	0	370.3	0	0	0
10/6/2009	7	N 35.40216°	W 083.88214°	0	0	0	87.1	0	0	0	153
10/6/2009	8	N 35.40327°	W 083.88405°	0	0	0	87.1	0	2	0	0
10/6/2009	9	N 35.40924°	W 083.88661°	0	0	0	0	0	4	0	370.3
10/6/2009	10	N 35.40749°	W 083.88610°	0	131	0	0	0	0	0	0

Cheoah River Non-Native Invasive Plant Control Project				Species Code	Scientific Name
River East 1/100th Acre Plot Monitoring Data:				ALJU	<i>Albizia julbrissin</i>
2011 Pre-Treatment				CEOR	<i>Celastrus orbiculatus</i>
				DIOP	<i>Dioscorea polystachya</i>
				LIS/V	<i>Ligustrum sinense/vulgare</i>
				LOJA	<i>Lonicera japonica</i>
				PATO	<i>Paulownia tomentosa</i>
				PULO	<i>Pueraria montana var. lobata</i>
				ROMU	<i>Rosa multiflora</i>

Date	Plot No.	Latitude	Longitude	Stems	Sq Ft	Sq Ft	Sq Ft	Sq Ft	Stems	Sq Ft	Sq Ft
				ALJU	CEOR	DIOP	LIS/V	LOJA	PATO	PULO	ROMU
8/10/2011	1	N 35.38106°	W 083.87838°	0	4.4	0	0	4.4	0	0	0
8/11/2011	2	N 35.38472°	W 083.86370°	1	0	0	0	0	0	0	4.4
8/11/2011	3	N 35.39877°	W 083.86766°	0	0	0	0	283	0	0	22
8/11/2011	4	N 35.38847°	W 083.86375°	0	0	0	0	0	0	0	0
8/11/2011	5	N 35.39823°	W 083.87545°	0	0	0	0	0	4	0	0
8/11/2011	6	N 35.39840°	W 083.87795°	0	0	0	0	65.3	0	0	0
8/11/2011	7	N 35.40212°	W 083.88220°	0	0	0	4.4	0	0	0	0
8/11/2011	8	N 35.40327°	W 083.88405°	0	0	0	0	0	3	0	0
8/9/2011	9	N 35.40924°	W 083.88658°	0	0	0	0	0	0	0	109
8/9/2011	10	N 35.40749°	W 083.88620°	0	22	0	0	0	0	0	0

Cheoah River Non-Native Invasive Plant Control Project

Road East 1/100th Acre Plot Monitoring Data:

2010 Pre-Treatment

Species Code	Scientific Name
ALJU	<i>Albizia julbrissin</i>
CEOR	<i>Celastrus orbiculatus</i>
DIOP	<i>Dioscorea polystachya</i>
LIS/V	<i>Ligustrum sinense/vulgare</i>
LOJA	<i>Lonicera japonica</i>
PATO	<i>Paulownia tomentosa</i>
PULO	<i>Pueraria montana var. lobata</i>
ROMU	<i>Rosa multiflora</i>

Date	Plot No.	Latitude	Longitude	Stems	Sq Ft	Sq Ft	Sq Ft	Sq Ft	Stems	Sq Ft	Sq Ft
				ALJU	CEOR	DIOP	LIS/V	LOJA	PATO	PULO	ROMU
7/20/2010	1	N 35.44044°	W 083.93158°	0	0	0	0	0	1	0	0
7/20/2010	2	N 35.44055°	W 083.93075°	0	0	0	0	0	0	283.1	0
7/20/2010	3	N 35.43848°	W 083.92162°	1	0	0	0	0	0	0	0
7/20/2010	4	N 35.43862°	W 083.91951°	0	0	0	0	0	0	349	0
7/20/2010	5	N 35.43855°	W 083.91901°	1	0	0	0	0	0	0	0
7/20/2010	6	N 35.43846°	W 083.91833°	0	0	0	0	0	2	0	0
7/20/2010	7	N 35.43840°	W 083.91810°	0	0	0	0	0	2	0	0
7/20/2010	8	N 35.43672°	W 083.91432°	0	0	0	0	0	0	414	0
7/20/2010	9	N 35.43608°	W 083.91355°	0	0	0	0	0	0	427	0
7/23/2010	10	N 35.43376°	W 083.91234°	0	0	0	0	0	1	0	0

Cheoah River Non-Native Invasive Plant Control Project				Species Code	Scientific Name
Road East 1/100th Acre Plot Monitoring Data:				ALJU	<i>Albizia julbrissin</i>
2011 Pre-Treatment				CEOR	<i>Celastrus orbiculatus</i>
				DIOP	<i>Dioscorea polystachya</i>
				LIS/V	<i>Ligustrum sinense/vulgare</i>
				LOJA	<i>Lonicera japonica</i>
				PATO	<i>Paulownia tomentosa</i>
				PULO	<i>Pueraria montana var. lobata</i>
				ROMU	<i>Rosa multiflora</i>

Date	Plot No.	Latitude	Longitude	Stems	Sq Ft	Sq Ft	Sq Ft	Sq Ft	Sq Ft	Stems	Sq Ft	Sq Ft
				ALJU	CEOR	DIOP	LIS/V	LOJA	PATO	PULO	ROMU	
8/12/2011	1	N 35.44044°	W 083.93158°	0	0	0	0	0	1	0	0	
8/12/2011	2	N 35.44066°	W 083.93084°	0	0	0	0	0	0	109	0	
8/12/2011	3	N 35.43842°	W 083.92160°	0	0	0	0	0	0	0	0	
8/12/2011	4	N 35.43863°	W 083.91949°	0	0	0	0	0	0	22	0	
8/12/2011	5	N 35.43853°	W 083.91901°	6	0	0	0	0	0	0	0	
8/12/2011	6	N 35.43845°	W 083.91834°	0	0	0	0	0	1	0	0	
8/12/2011	7	N 35.43840°	W 083.91810°	0	0	0	0	0	4	0	0	
8/16/2011	8	N 35.43670°	W 083.91419°	0	0	0	0	0	0	218	0	
8/16/2011	9	N 35.43610°	W 083.91350°	0	0	0	0	0	0	44	0	
8/16/2011	10	N 35.43376°	W 083.91234°	0	0	0	0	0	2	0	0	

Bunched Arrowhead

Sagittaria fasciculata



Ochlawaha Bog

Henderson County

ARRA-Funded Restoration Project - 2010

- Historic wetland bog that was drained and converted to a farm field.
- Exotic invasive plants extensive on dikes, ditches; in forest.
- Hydrology partially restored to enhance *Sagittaria* habitat.



Questions? - Contact Info...

Bob Gale

Ecologist & Public Lands Director

Email: bob@wnca.org

Phone: 828-258-8737

www.wnca.org

WNC Alliance

29 North Market Street

Asheville, NC 28801

