

ON THE MOVE

INVASIVE SPECIES

- Coming to you
- Highway vector
- Partnerships



INVASIVE or NOXIOUS WEED?



Poison Ivy

❑ **INVASIVE PLANTS:**

Aggressive nonnatives

❑ **NOXIOUS WEEDS are aggressive nonnatives that threaten:**

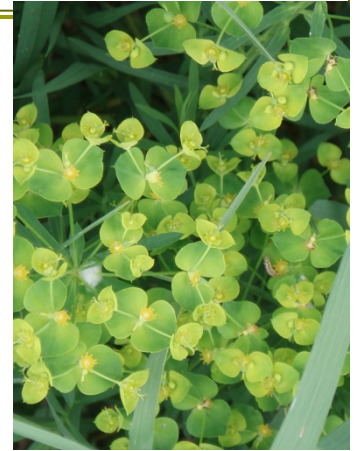
1. **agriculture,**
2. **environment, or**
3. **human health.**

On County, State or Federal
Regulatory Lists.....

\$137,000,000,000* /yr.

□ **ECONOMIC LOSS:**

- Crop yield loss
- Range forage loss
- Forest production loss
- Tourism and recreation limited
- CONTROL COST of public and private lands
- Property values



□ **ECOLOGICAL LOSS: UNKNOWN**

- wildlife habitat
- increased wildfire losses
- biodiversity and endangered species

- * **Cornell University estimate, Pimentel, 1999.**

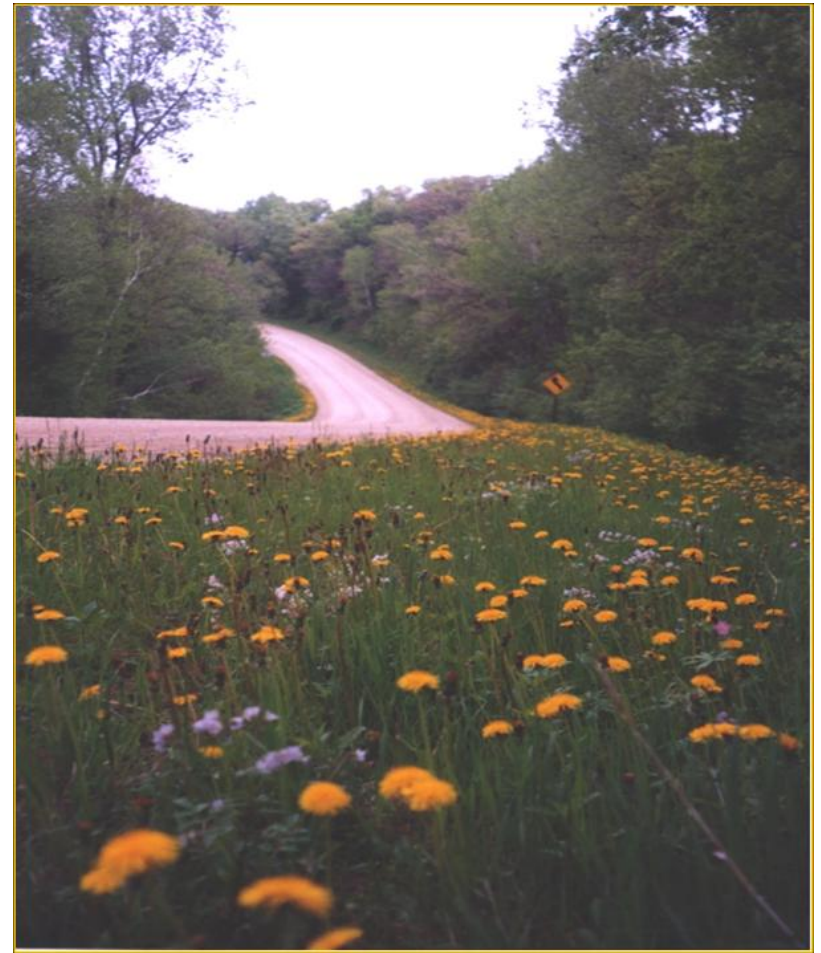


The Lessons of Kudzu!



ON THE MOVE...

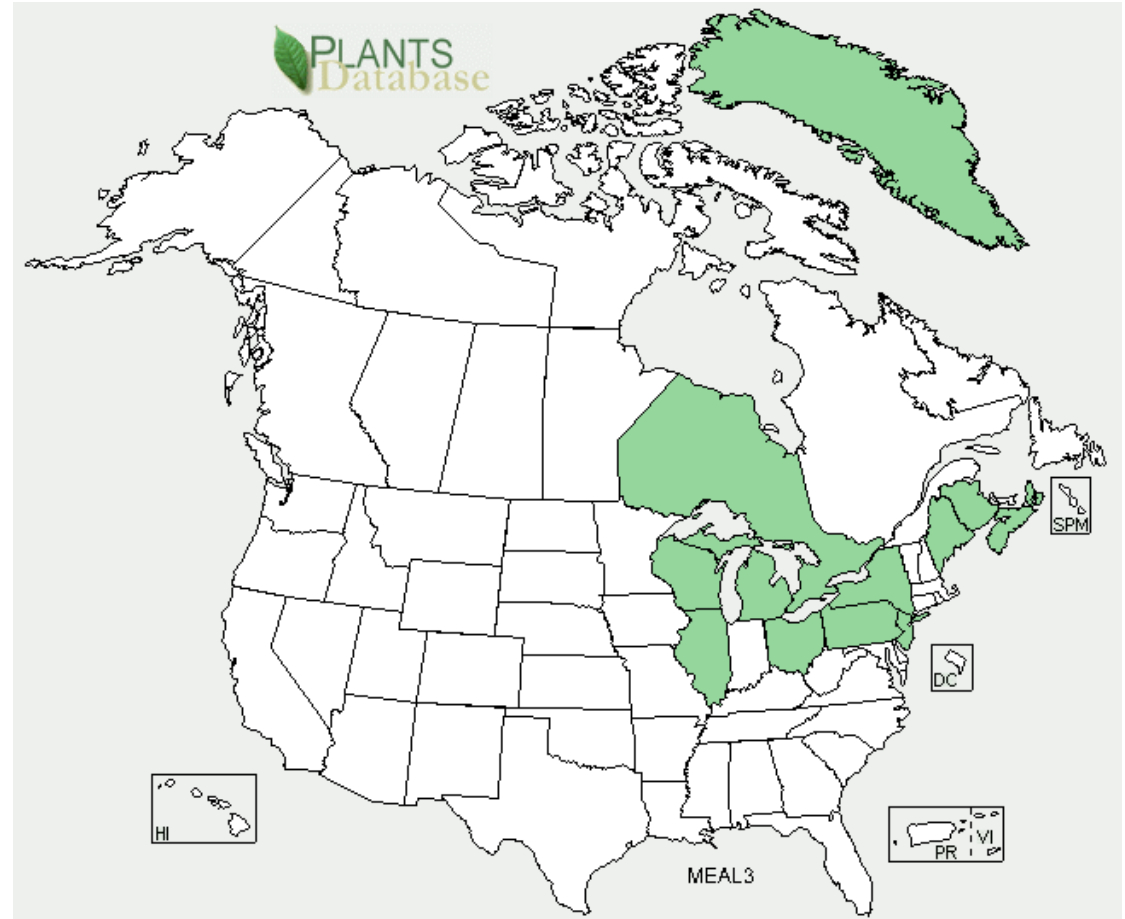
highways only one of many vectors



ON THE MOVE, Yellow Sweet Clover



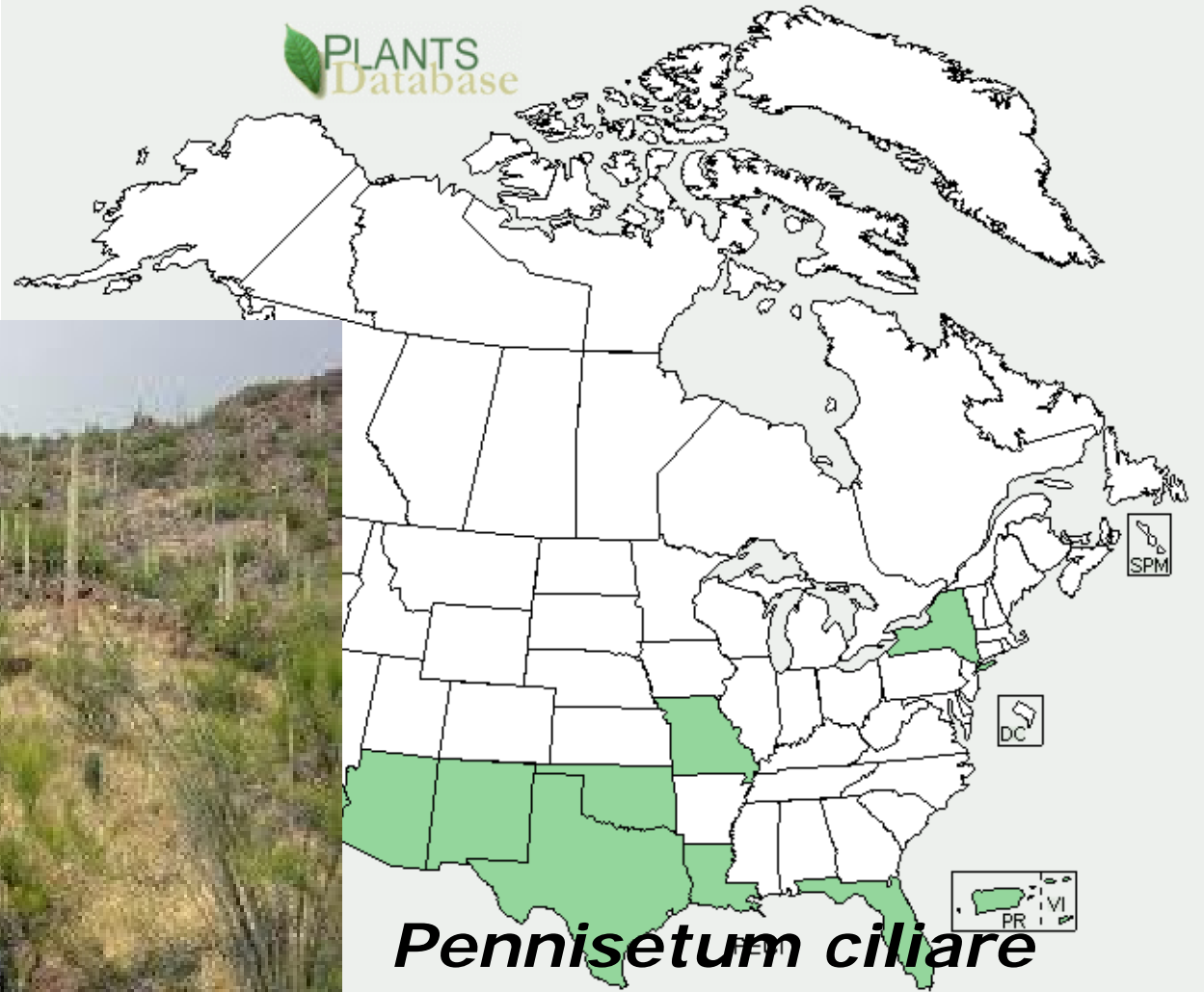
MELILOTUS OFFICINALIS



ON THE MOVE, Buffelgrass

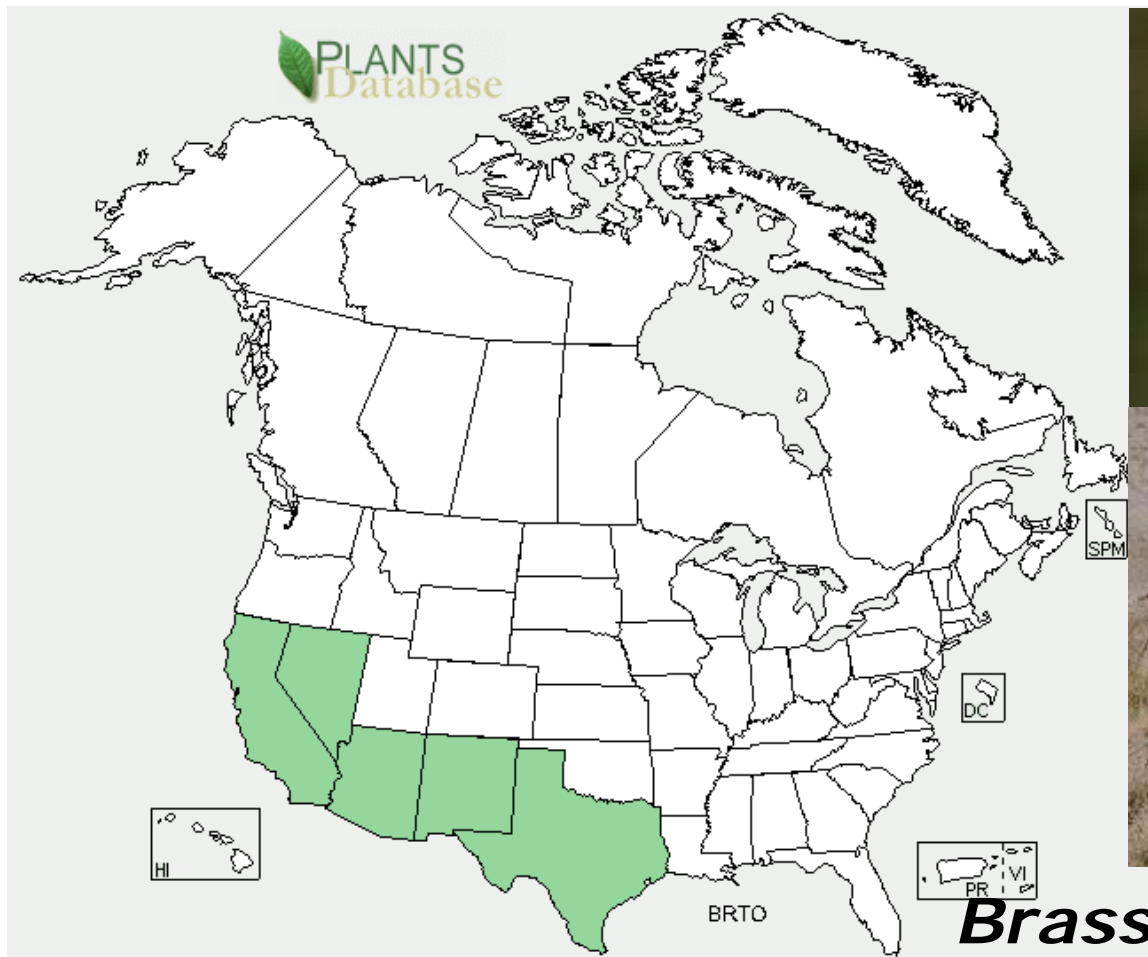


PLANTS
Database



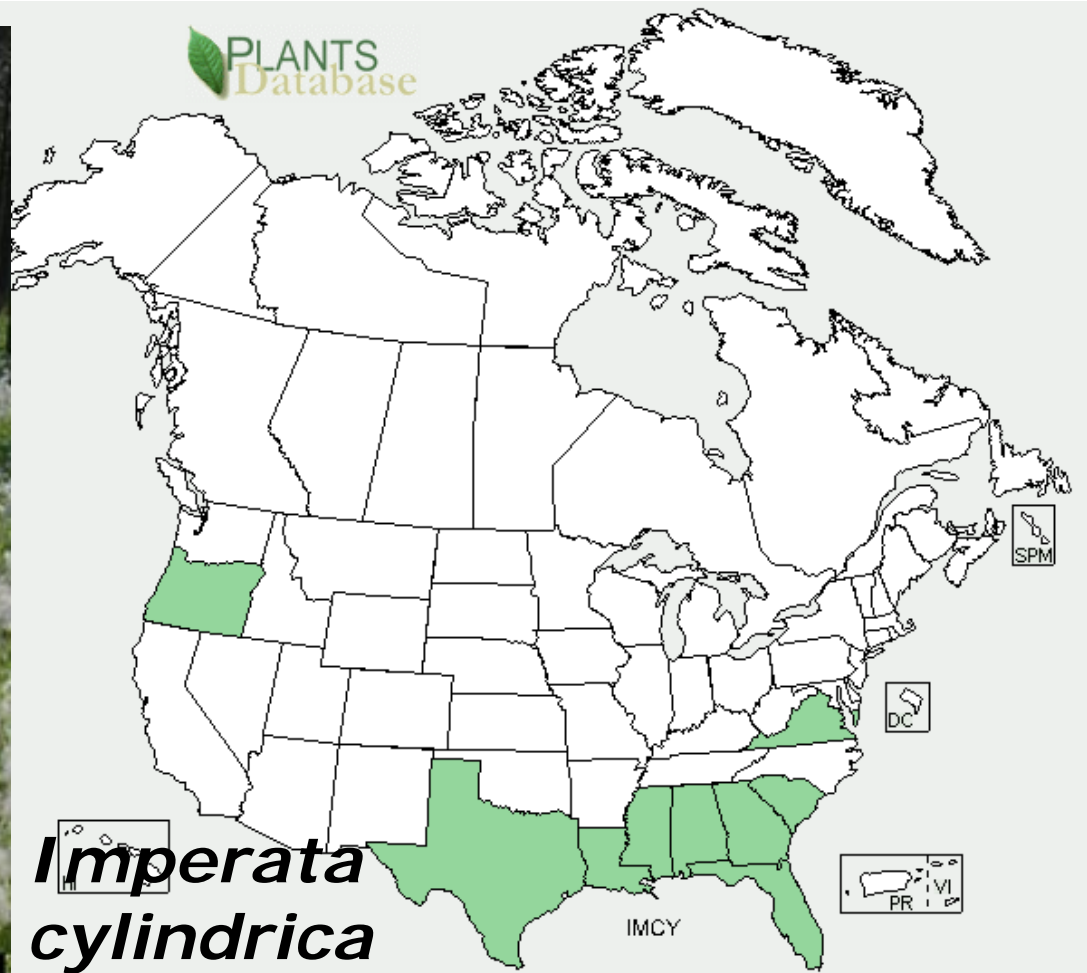
Pennisetum ciliare

ON THE MOVE, Sahara mustard



Brassica tournefortii

ON THE MOVE, Cogongrass



*Imperata
cylindrica*

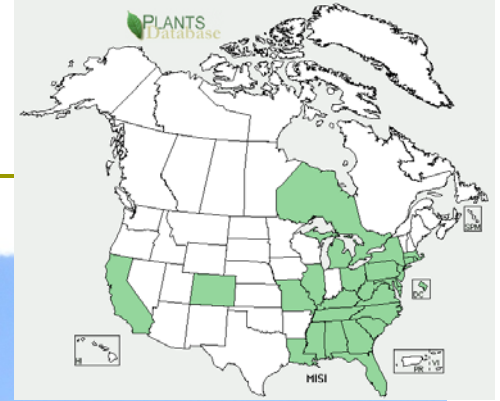
ON THE MOVE, Japanese stiltgrass



Microstegium vimineum

UGA1378046

On the Move -Chinese Silver Grass



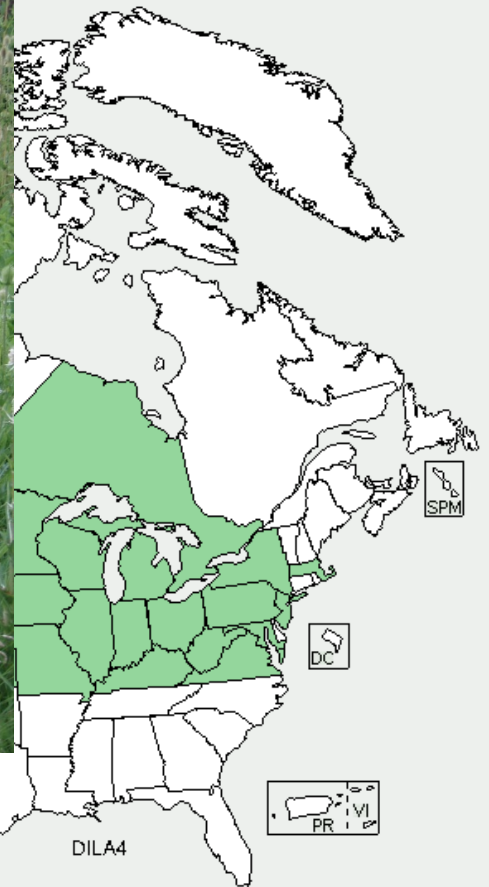
*Miscanthus
sinensis*



ON THE MOVE - Cutleaf Teasel



Dipsacus laciniatus



REMEMBER!

**Invasive Species
DO NOT
RESPECT
POLITICAL
BOUNDARIES!**

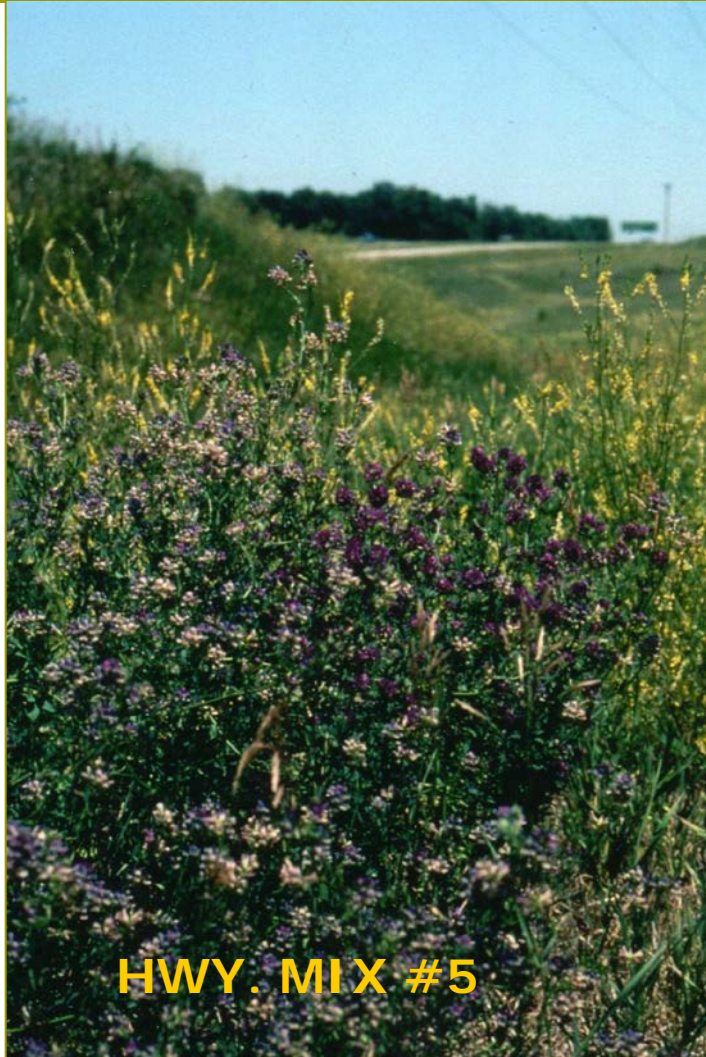


Canada Thistle

DOTs spread them accidentally!



And DOTs Planted Them!



- ❑ sweet clover
- ❑ alfalfa
- ❑ smooth brome
- ❑ timothy
- ❑ perennial rye
- ❑ crownvetch

AGRICULTURAL
Instead of
ECOLOGICAL
SOLUTIONS

NOT JUST A BUNCH of WEEDS !



Wildflower Mixes! in 1987



Native Wildflower Mixes, 90's



PRESERVE REMNANTS



WHAT DOTs CAN DO - BMPs



Certify GRAVEL PITS !



SPECIFY “WEED-FREE:

MULCH

SOIL

SOD



AVOID or RESTORE



Kudzu planted in 1940 on 3:1 slopes



WEED CONTROL: I R V M



CWIMAS



APPLIED SCIENCE

- ▣ Development of affordable WEED WASHING, on market 2012



EDDMapS

- DISTRIBUTION
- STATE and COUNTY
- CURRENT

- YOU CAN HELP!!!

The screenshot shows the EDDMapS website interface. At the top, there is a navigation menu with links for "Report Sightings", "Distribution Maps", "Species Information", "Tools & Training", "My EDDMapS", and "About". Below the menu, there are three main sections: "Distribution Maps", "Plants", and a species list.

Distribution Maps

- View Distribution by State
- View Distribution by County
- Animal Distribution (Currently Florida Only)

Plants

Browse by Growth Habit:

- AQUATICS
- HERBS/FORBS
- GRASSES
- SHRUBS
- TREES
- VINES

1262 Species

Click on each species to view state, county and point distribution maps.

Subject Name	Scientific Name	View				Records
		State	County	Point	List	
rosarypea	<i>Abura precatorius</i> L.	State	County	Point	List	1713
hairy Indian mallow	<i>Abutilon grandifolium</i> (Willd.) Sweet	State	County	Point	List	8
velvetleaf	<i>Abutilon theophrasti</i> Medik	State	County	Point	List	2135
earleaf acacia	<i>Acacia auriculiformis</i> A. Cunningham ex Benth.	State	County	Point	List	519
small Philippine acacia	<i>Acacia confusa</i> Merr	State	County	Point	List	8
silver wattle	<i>Acacia dealbata</i> Link	State	County	Point	List	20
Sydney golden wattle	<i>Acacia longifolia</i> (Andr.) Willd.	State	County	Point	List	23
black wattle	<i>Acacia mearnsii</i> de Wildeman.	State	County	Point	List	16

CWMAs and more:

PARTNERSHIPS

- ▣ LOCAL
- ▣ STATE
- ▣ INTERSTATE
- ▣ INTERNATIONAL

BLM, ODOT, & Malheur County

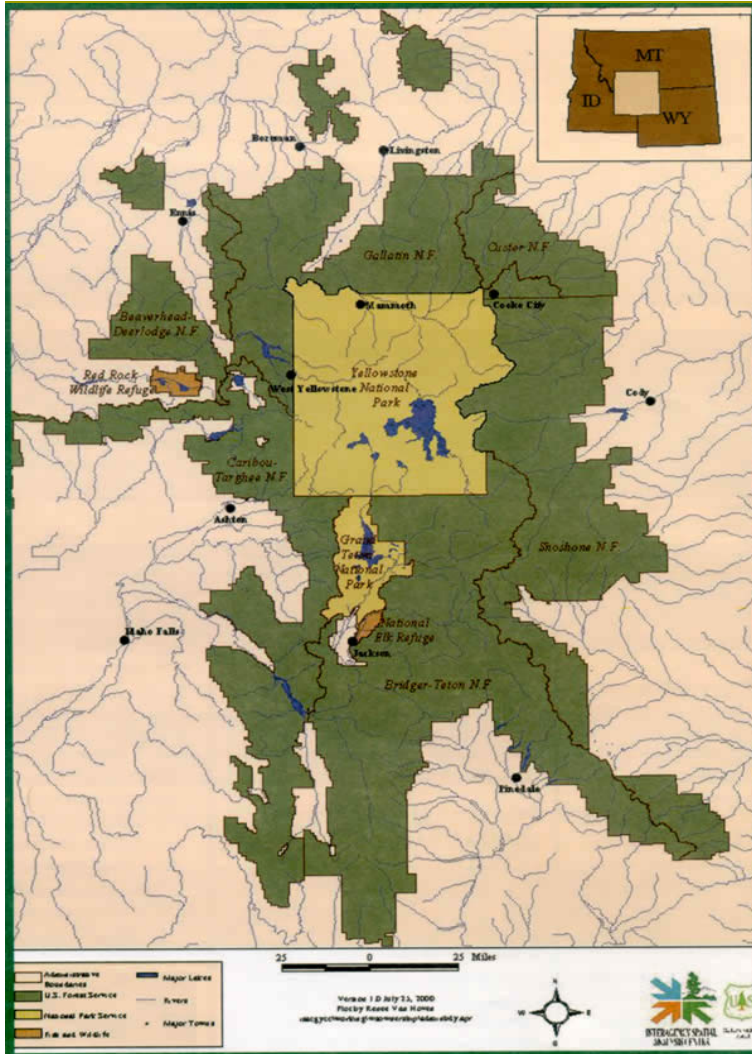
3,686,000 acres, 2000 centerline miles



- DOT > truck
+
- BLM > spray equipment
+
- County > driver

PARTNERSHIP
10 x coverage

GREATER YELLOWSTONE



- ❑ Federal Agencies +
- ❑ State Agencies +
- ❑ Local Agencies +

**11,000,000 acres
PARTNERSHIP**

ADIRONDACK PARK

INVASIVE PLANT PARTNERSHIP

- ❑ APIPP MOU 2001
- ❑ NYSDOT, in lead

- ❑ **ERADICATION**
**HERE IS STILL
POSSIBLE!!!**



PARTNERSHIPS: Georgia 2008

Cogongrass,
Imperata cylindrica



Fond du Lac Band of Chippewa

□ MOU signed on May 15, 2009



□ Agreed to:

- PRESERVE natural heritage
- USE FL permit system.
- NOTIFY FL about spray dates/reports
- MONITOR & REPORT early
- MAP invasives on ROWs.

AVOID DISTURBANCES!



- ❑ Ditch cleaning
- ❑ Scalping turf
- ❑ Car crashes
- ❑ Fiber optics
- ❑ AND MORE > > > >



WEEDS ACROSS BORDERS



2008 WEEDS ACROSS BORDERS

CONGRESO MALEZAS SIN FRONTERAS

ONTIÈRES



**OKANOGAN
COUNTY,
WASH DOT,
and B.C.**

ON THE MOVE, Garlic mustard



Public AWARENESS

**ONLY IF PEOPLE
UNDERSTAND
WILL THEY SUPPORT
THE CONTROL OF
INVASIVE PLANTS!**

Why Should I Care About Invasive Plants?

HOW INVASIVE PLANTS IMPACT
HUNTING, FISHING, BOATING,
GARDENING, HIKING, BIKING,
HORSEBACK RIDING, AND
OTHER RECREATIONAL ACTIVITIES
IN THE MIDWEST


MIPN.org
Midwest Invasive Plant Network

