

# Southern Appalachian Cooperative Weed Management Partnership

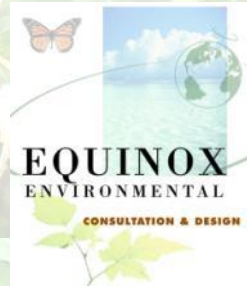




## **SACWMP's Mission**

*Work cooperatively to protect and restore the significant natural heritage of the Southern Appalachians by preventing, detecting, and controlling invasive exotic plants.*

# Partners in Invasive Exotic Plant Management



# Cooperative Weed Management Why Partnerships?

- It takes a lot of work and a lot of money!
- Operates across jurisdictional boundaries
- Local organizations
- High visibility
- Increased public awareness and education



# SACWMP Strategic Plan, January 2012

Prevention	Education	Detection	Control	Restoration	Cooperation
<p>Prevent the establishment of new species to our region as well as the spread of existing infestations</p> <ol style="list-style-type: none"> <li>Continue to campaign to limit/stop the sale of invasive exotic plants <ul style="list-style-type: none"> <li>Develop better name for campaign</li> <li>Certify nurseries</li> <li>Educate the public</li> <li>Advocate for non-invasive seed mixes for NCDOT/Contractors</li> <li>Policy advocacy</li> </ul> </li> <li>Evaluate impact of boot brush signs <ul style="list-style-type: none"> <li>Install more as needed</li> </ul> </li> <li>Establish Develop Weed-free BMPs <ul style="list-style-type: none"> <li>Use certified materials when feasible (gravel, mulch, fill dirt, etc.)</li> <li>Clean equipment, clothes, tools</li> <li>Limit soil disturbance</li> <li>Replant immediately after soil disturbance</li> </ul> </li> <li>Research suppliers of weed-free materials (quarries, mulch yards, etc.) <ul style="list-style-type: none"> <li>Promote these suppliers</li> </ul> </li> </ol>	<p>Increase public awareness of the impacts of invasive exotic plants and resource conservation</p> <ol style="list-style-type: none"> <li>Determine best information distribution <ul style="list-style-type: none"> <li>Conferences</li> <li>Home and garden</li> <li>Master gardener</li> <li>Home owners association</li> <li>Boy Scouts</li> <li>State Fair</li> <li>Extension Office</li> </ul> </li> <li>Develop lesson plans for 12<sup>th</sup> grades <ul style="list-style-type: none"> <li>Train the trainers</li> <li>Provide environmental education credits to teachers</li> </ul> </li> <li>Continue to promote SACWMP in the media <ul style="list-style-type: none"> <li>Website</li> <li>Enewsletters</li> <li>Press</li> <li>Radio</li> <li>Weed of the Week podcasts</li> <li>Google ads</li> </ul> </li> <li>Integrate fun/creative/recreate-on activities into volunteer events</li> </ol>	<p>Conduct inventories for the purposes of controlling infestations</p>	<p>Manage inventoried areas through integrated</p> <ol style="list-style-type: none"> <li>Continue control on 10 previously treated acres with volunteers</li> <li>Initiate control on 25 acres with volunteers</li> <li>Develop management plans for each project area <ul style="list-style-type: none"> <li>Control methods</li> <li>Timing</li> <li>Person hours</li> <li>Equipment needs</li> <li>Safety</li> <li>Signage</li> </ul> </li> <li>Conduct management cost analysis <ul style="list-style-type: none"> <li>Control vs. prevention</li> <li>Cost per acre/species/year</li> </ul> </li> </ol>	<p>Re-establish site with native trees, shrubs, and groundcovers necessary to restore healthy, functioning natural communities</p> <p>Develop guidelines for native vegetation disturbance thresholds vs. invasive cover species. invasive seed sources. cover (sunlight) bare ground. are guidelines success of replanting and other restoration options</p> <ol style="list-style-type: none"> <li>Identify additional sources of inexpensive/free native plant material</li> </ol>	<p>Facilitate agreements and sustain participation by citizens, agencies, and partner organizations across jurisdictional boundaries</p> <ol style="list-style-type: none"> <li>Log 750 volunteer hours per year</li> <li>Increase number of repeat volunteers every year</li> <li>Explore, develop, and retain partnerships with federal, state, non-profit, and private partners <ul style="list-style-type: none"> <li>Increase coordination between partners</li> <li>Recruit interns to work on SACWMP projects</li> <li>Explore the need for a MOU or Participatory Agreement</li> </ul> </li> <li>Explore pros/cons of SACWMP becoming a 501(c)(3) entity</li> <li>Pursue additional funding for SACWMP projects <ul style="list-style-type: none"> <li>Explore cost of funding a FT or PT program manager</li> <li>Determine resource needs</li> </ul> </li> <li>Determine geographic influence of SACWMP based on intersection of management priorities <ul style="list-style-type: none"> <li>Map management areas</li> </ul> </li> </ol>
<h2>Prevention</h2> <p>Prevent the establishment of new species to our region as well as the spread of existing infestations</p>					

# Prevention

Prevent the establishment of new species to our region as well as the spread of existing infestations



## THE SPREAD OF INVASIVE EXOTIC PLANTS

### What are they?

Exotic plants are species that did not historically grow in our region. These plants are considered invasive if they grow or spread rapidly and are not kept in check by natural controls.

### Why are they a problem?

Invasive exotic plants out-compete native plants for sunlight, water, nutrients and growing space. This causes a decline in biodiversity, displaces rare plants, and decreases food supplies for mammals, birds and insects.

### How can you help?

- Clean shoes, clothes, and pets to prevent spreading seeds
- Landscape your yard and garden with native plants and seed
- Learn how to identify these plants and educate your friends
- Get involved in volunteer monitoring and control projects

### Want more information?

The Southern Appalachian Cooperative Weed Management Partnership (SACWMP) is working cooperatively to protect and restore the significant natural heritage of the Southern Appalachians by preventing, detecting and controlling invasive exotic plants. This partnership relies heavily on volunteers to monitor and control invasive exotic plants in our forests.

For more information about the problem or how you can be part of the solution,

Please visit our website:

[www.sacwmp.org](http://www.sacwmp.org)



**Japanese Stiltgrass**  
*Microstegium vimineum*

**Garlic Mustard**  
*Alliaria petiolata*

**Chinese Silvergrass**  
*Miscanthus sinensis*

**Kudzu**  
*Pueraria montana*

**Oriental Bittersweet**  
*Celastrus orbiculatus*

**Japanese Spiraea**  
*Spiraea japonica*

## Please use the boot brush below

to remove dirt and seeds from your shoes before and after hiking. Thank you!





# SACWMP Strategic Plan, January 2012

Prevention	Education	Detection	Control	Restoration	Cooperation
<p>Prevent the establishment of new species to our region as well as the spread of existing infestations</p> <ol style="list-style-type: none"> <li>Continue to campaign to limit/stop the sale of invasive exotic plants <ul style="list-style-type: none"> <li>Develop better name for campaign</li> <li>Certify nurseries</li> <li>Educate the public</li> <li>Advocate for non-invasive seed mixes for NCDOT/Contractors</li> <li>Policy advocacy</li> </ul> </li> <li>Evaluate impact of boot brush signs <ul style="list-style-type: none"> <li>Install more as needed</li> </ul> </li> <li>Establish Develop Weed-free BMPs <ul style="list-style-type: none"> <li>Use certified materials when feasible (gravel, mulch, fill dirt, etc.)</li> <li>Clean equipment, clothes, tools</li> <li>Limit soil disturbance</li> <li>Replant immediately after soil disturbance</li> </ul> </li> <li>Research suppliers of weed-free materials (quarries, mulch yards, etc.) <ul style="list-style-type: none"> <li>Promote these suppliers</li> </ul> </li> </ol>	<p>Increase public awareness of the impacts of invasive exotic plants and natural resource conservation</p> <ol style="list-style-type: none"> <li>Determine best information distribution methods <ul style="list-style-type: none"> <li>Conferences</li> <li>Home and garden tours</li> <li>Master gardener program</li> <li>Home owners association</li> <li>Boy Scouts</li> <li>State Fair</li> <li>Extension Office</li> </ul> </li> <li>Develop lesson plans for 12<sup>th</sup> grades <ul style="list-style-type: none"> <li>Train the trainers</li> <li>Provide environmental education credits to teachers</li> </ul> </li> <li>Continue to promote SACWMP in the media <ul style="list-style-type: none"> <li>Website</li> <li>Enewsletters</li> <li>Press</li> <li>Radio</li> <li>Weed of the Week podcasts</li> <li>Google ads</li> </ul> </li> <li>Integrate environmental education activities into volunteer events</li> </ol>	<p>Conduct inventories for the purposes of controlling infestations</p>	<p>Manage inventoried areas through integrated control</p> <ol style="list-style-type: none"> <li>Continue control on 10 previously treated acres with volunteers</li> <li>Initiate control on 25 acres with volunteers</li> <li>Develop management plans for each project area <ul style="list-style-type: none"> <li>Control methods</li> <li>Timing</li> <li>Person hours</li> <li>Equipment needs</li> <li>Safety</li> <li>Signage</li> </ul> </li> <li>Conduct management cost analysis <ul style="list-style-type: none"> <li>Control vs. prevention</li> <li>Cost per acre/species/year</li> </ul> </li> </ol>	<p>Re-establish site with native trees, shrubs, and groundcovers necessary to restore healthy, functioning natural communities</p> <ul style="list-style-type: none"> <li>Develop guidelines for native vegetation disturbance thresholds vs. invasive cover</li> <li>Identify invasive seed sources</li> <li>Develop cover (sunlight) requirements</li> <li>Develop replanting guidelines</li> <li>Monitor success of replanting and other restoration options</li> </ul> <ol style="list-style-type: none"> <li>Identify additional sources of inexpensive/free native plant material</li> </ol>	<p>Facilitate agreements and sustain participation by citizens, agencies, and partner organizations across jurisdictional boundaries</p> <ol style="list-style-type: none"> <li>Log 750 volunteer hours per year</li> <li>Increase number of repeat volunteers every year</li> <li>Explore, develop, and retain partnerships with federal, state, non-profit, and private partners <ul style="list-style-type: none"> <li>Increase coordination between partners</li> <li>Recruit interns to work on SACWMP projects</li> <li>Explore the need for a MOU or Participatory Agreement</li> </ul> </li> <li>Explore pros/cons of SACWMP becoming a 501(c)(3) entity</li> <li>Pursue additional funding for SACWMP projects <ul style="list-style-type: none"> <li>Explore cost of funding a FT or PT program manager</li> <li>Determine resource needs</li> </ul> </li> <li>Determine geographic influence of SACWMP based on intersection of management priorities <ul style="list-style-type: none"> <li>Map management areas</li> </ul> </li> </ol>
<h2>Education</h2> <h3>Increase public awareness of the impacts of invasive exotic plants and natural resource conservation</h3>					



# Education

## Increase public awareness of the impacts of invasive exotic plants and natural resource conservation



### SACWMP News Vine

*Biannual Newsletter of the Southern Appalachian Cooperative Weed Management Partnership*

VOLUME 1, ISSUE 2      May 2011

*Working cooperatively to protect and restore the significant natural heritage of the Southern Appalachians by preventing, detecting, and controlling invasive exotic plants.*

#### 1st Annual Great Garlic Mustard Gathering!

**SACWMP Partners:**  
Appalachian Trail Conservancy  
Iowaan/Mohk/Carolina Alliance  
Hohmann Valley Reserve  
Conservation District  
NCC Division of Forest Resources  
US Forest Service  
US Fish & Wildlife Service  
US Park Service

On April 23rd 2011, a group of dedicated volunteers with a vested interest in invasive exotic plants came together for a full-on blitz at Lemmon Gap. The target garlic mustard (*Alliaria petiolata*) is they, however, isn't introduced from Europe for its aesthetic and

fox at Lemmon Gap. John Odell of the ATC gave a quick ID lesson, split the volunteers into groups, then we all got to pulling! Volunteers competed for prizes based on bag weight, although everyone who participated was already considered a winner!

With the help of the NC Mountain Mushroom Co-op shared his work using invasives as a substrate for cultivating edible mushrooms...very cool! Bob Johns displayed a woodblock print created by an artist who used invasive to create a masterpiece black print paper, the paper—pressed from garlic mustard, the block—cut from Norway maple, and the ink—made from Mule-ear, rose and hickory leaf mulch. Talk about creative!

Finally we held the weigh-in. The results: just under 500 pounds of



2012 Meeting Agenda - SACWMP Southern Appalachian Cooperative Weed Management Partnership

www.sacwmp.org

SACWMP Home | Links | Contact

About Us | Management Areas | Partners | Plants of Concern | Distribution Maps | Report Sightings | Green Industry Campaign | Media | Get Involved

### Southern Appalachian Cooperative Weed Management Partnership

SACWMP works cooperatively to protect and restore the significant natural heritage of the Southern Appalachians by preventing, detecting, and controlling invasive exotic plants.

We primarily focus along the Appalachian National Scenic Trail (A.T.) corridor, USDA National Forest lands, National Park Service units, and along state roads and highways where invasive exotic plants and natural areas of high conservation significance occur. The collaborative management effort overcomes jurisdictional boundaries and the resource burden of individual agencies and organizations while establishing common goals and facilitating cooperation and shared environmental stewardship.

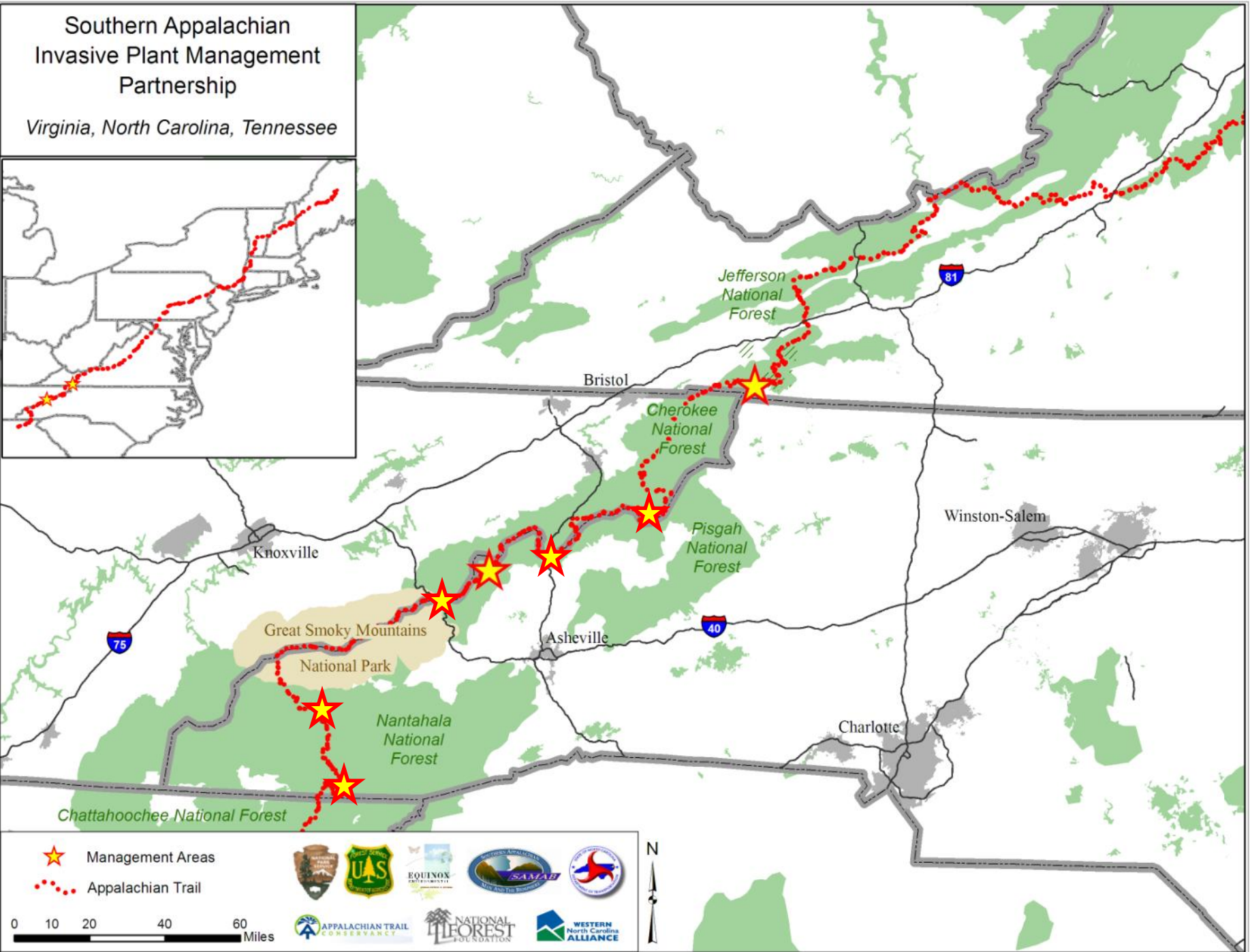
Hand pulling garlic mustard in a Rich Cove Forest in Mount Rogers National Recreation Area in southwest Virginia.

# SACWMP Strategic Plan, January 2012

Prevention	Education	Detection	Control	Restoration	Cooperation
<p>Prevent the establishment of new species to our region as well as the spread of existing infestations</p> <ol style="list-style-type: none"> <li>Continue to campaign to limit/stop the sale of invasive exotic plants <ul style="list-style-type: none"> <li>Develop better name for campaign</li> <li>Certify nurseries</li> <li>Educate the public</li> <li>Advocate for non-invasive seed mixes for NCDOT/Contractors <ul style="list-style-type: none"> <li>Policy advocacy</li> </ul> </li> </ul> </li> <li>Evaluate impact of boot brush signs <ul style="list-style-type: none"> <li>Install more as needed</li> </ul> </li> <li>Establish Develop Weed-free BMPs <ul style="list-style-type: none"> <li>Use certified materials when feasible (gravel, mulch, fill dirt, etc.)</li> <li>Clean equipment, clothes, tools</li> <li>Limit soil disturbance</li> <li>Replant immediately after soil disturbance</li> </ul> </li> <li>Research suppliers of weed-free materials (quarries, mulch yards, etc.) <ul style="list-style-type: none"> <li>Promote these suppliers</li> </ul> </li> </ol>	<p>Increase public awareness of the impacts of invasive exotic plants and natural resource conserv</p> <ol style="list-style-type: none"> <li>Determine best vent information distributi <ul style="list-style-type: none"> <li>Conferences</li> <li>Home and garden sh</li> <li>Master gardeners</li> <li>Home owners associ</li> <li>Boy Scouts</li> <li>State Fair</li> <li>Extension Office</li> </ul> </li> <li>Develop lesson plan 12<sup>th</sup> grades <ul style="list-style-type: none"> <li>Train the trainers</li> <li>Provide environment education credits to te</li> </ul> </li> <li>Continue to promo SACWMP in the media <ul style="list-style-type: none"> <li>Website</li> <li>Enewsletters</li> <li>Press</li> <li>Radio</li> <li>Weed of the Week podcasts</li> <li>Google ads</li> </ul> </li> <li>Integrate fun/creative/recreate-on activities into volunteer events</li> </ol>	<p>Conduct inventories for the purposes of controlling infestations and monitoring the</p> <p><b>Detection</b></p> <p>Conduct inventories for the purposes of controlling infestations and monitoring the extent of infestation over time</p>	<p>Manage inventoried areas through integrated pest management following each plant's</p> <ol style="list-style-type: none"> <li>for each project area <ul style="list-style-type: none"> <li>Control methods</li> <li>Timing</li> <li>Person hours</li> <li>Equipment needs</li> <li>Safety</li> <li>Signage</li> </ul> </li> <li>Conduct management cost analysis <ul style="list-style-type: none"> <li>Control vs. prevention</li> <li>Cost per acre/species/year</li> </ul> </li> </ol>	<p>Re-establish site with native trees, shrubs, and groundcovers necessary to restore healthy, ing natural unities</p> <p>Guidelines for e vegetation nce thresholds invasive cover rasive seed sources r (sunlight) elines ccess of replanting ier restoration ditional sources of ree native plant</p>	<p>Facilitate agreements and sustain participation by citizens, agencies, and partner organizations across jurisdictional boundaries</p> <ol style="list-style-type: none"> <li>Log 750 volunteer hours per year</li> <li>Increase number of repeat volunteers every year</li> <li>Explore, develop, and retain partnerships with federal, state, non-profit, and private partners <ul style="list-style-type: none"> <li>Increase coordination between partners</li> <li>Recruit interns to work on SACWMP projects</li> <li>Explore the need for a MOU or Participatory Agreement</li> </ul> </li> <li>Explore pros/cons of SACWMP becoming a 501(c)(3) entity</li> <li>Pursue additional funding for SACWMP projects <ul style="list-style-type: none"> <li>Explore cost of funding a FT or PT program manager</li> <li>Determine resource needs</li> </ul> </li> <li>Determine geographic influence of SACWMP based on intersection of management priorities <ul style="list-style-type: none"> <li>Map management areas</li> </ul> </li> </ol>

# Southern Appalachian Invasive Plant Management Partnership

Virginia, North Carolina, Tennessee



- ★ Management Areas
- ⋯ Appalachian Trail



# Detection

Conduct inventories for the purposes of controlling infestations and monitoring the extent of infestation over time



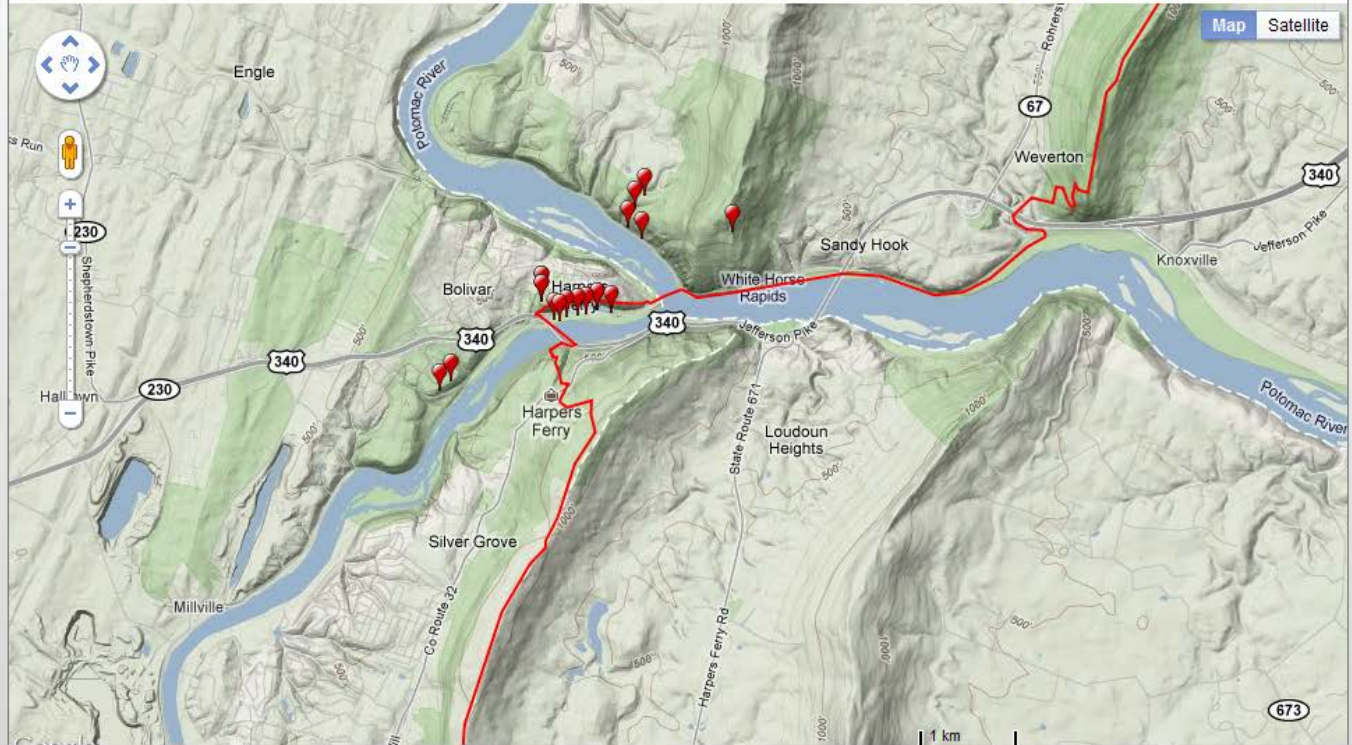


garlic mustard Alliaria petiolata (Bieb.) Cavara & Grande

USDA PLANTS Symbol: ALPE4 Invasive Plant Atlas

Load Time: 14 ms

Print Excel Google Earth



# SACWMP Strategic Plan, January 2012

Prevention	Education	Detection	Control	Restoration	Cooperation
<p>Prevent the establishment of new species to our region as well as the spread of existing infestations</p> <ol style="list-style-type: none"> <li>Continue to campaign to limit/stop the sale of invasive exotic plants <ul style="list-style-type: none"> <li>Develop better name for campaign</li> <li>Certify nurseries</li> <li>Educate the public</li> <li>Advocate for non-invasive seed mixes for NCDOT/Contractors <ul style="list-style-type: none"> <li>Policy advocacy</li> </ul> </li> </ul> </li> <li>Evaluate impact of boot brush signs <ul style="list-style-type: none"> <li>Install more as needed</li> </ul> </li> <li>Establish Develop Weed-free BMPs <ul style="list-style-type: none"> <li>Use certified materials when feasible (gravel, mulch, fill dirt, etc.)</li> <li>Clean equipment, clothes, tools</li> <li>Limit soil disturbance</li> <li>Replant immediately after soil disturbance</li> </ul> </li> <li>Research suppliers of weed-free materials (quarries, mulch yards, etc.) <ul style="list-style-type: none"> <li>Promote these suppliers</li> </ul> </li> </ol>	<p>Increase public awareness of the impacts of invasive exotic plants and natural resource conse</p> <ol style="list-style-type: none"> <li>Determine best ve information distribu <ul style="list-style-type: none"> <li>Conferences</li> <li>Home and garden s</li> <li>Master gardeners</li> <li>Home owners asso</li> <li>Boy Scouts</li> <li>State Fair</li> <li>Extension Office</li> </ul> </li> <li>Develop lesson pl 12<sup>th</sup> grades <ul style="list-style-type: none"> <li>Train the trainers</li> <li>Provide environme education credits to teachers</li> </ul> </li> <li>Continue to promote SACWMP in the media <ul style="list-style-type: none"> <li>Website</li> <li>Enewsletters</li> <li>Press</li> <li>Radio</li> <li>Weed of the Week podcasts</li> <li>Google ads</li> </ul> </li> <li>Integrate fun/creative/recreate-on activities into volunteer events</li> </ol>	<p>Conduct inventories for the purposes of controlling infestations and monitoring the</p>	<p>Manage inventoried areas through integrated pest management following each plant's</p> <p><b>Control</b></p> <p>Manage inventoried areas through integrated pest management following each plant's phenology</p> <ol style="list-style-type: none"> <li>Initiate control on 25 acres with volunteers</li> <li>Develop management plans for each project area <ul style="list-style-type: none"> <li>Control methods</li> <li>Timing</li> <li>Person hours</li> <li>Equipment needs</li> <li>Safety</li> <li>Signage</li> </ul> </li> <li>Conduct management cost analysis <ul style="list-style-type: none"> <li>Control vs. prevention</li> <li>Cost per acre/species/year</li> </ul> </li> </ol>	<p>Re-establish site with native trees, shrubs, and groundcovers necessary to restore healthy, ning natural munities</p> <p>guidelines for tive vegetation bance thresholds s. invasive cover invasive seed sources</p> <p>ver (sunlight) re idelines access of replanting other restoration</p> <p>additional sources of inexpensive/free native plant material</p>	<p>Facilitate agreements and sustain participation by citizens, agencies, and partner organizations across jurisdictional boundaries</p> <ol style="list-style-type: none"> <li>Log 750 volunteer hours per year</li> <li>Increase number of repeat volunteers every year</li> <li>Explore, develop, and retain partnerships with federal, state, non-profit, and private partners <ul style="list-style-type: none"> <li>Increase coordination between partners</li> <li>Recruit interns to work on SACWMP projects</li> <li>Explore the need for a MOU or Participatory Agreement</li> </ul> </li> <li>Explore pros/cons of SACWMP becoming a 501(c)(3) entity</li> <li>Pursue additional funding for SACWMP projects <ul style="list-style-type: none"> <li>Explore cost of funding a FT or PT program manager</li> <li>Determine resource needs</li> </ul> </li> <li>Determine geographic influence of SACWMP based on intersection of management priorities <ul style="list-style-type: none"> <li>Map management areas</li> </ul> </li> </ol>

# Control

Manage inventoried areas through integrated pest management following each plant's phenology





# SACWMP Strategic Plan, January 2012

<h2>Prevention</h2> <p>Prevent the establishment of new species to our region as well as the spread of existing infestations</p>	<h2>Education</h2> <p>Increase public awareness of the impacts of invasive exotic plants and natural resource conse</p>	<h2>Detection</h2> <p>Conduct inventories for the purposes of controlling infestations and monitoring the</p>	<h2>Control</h2> <p>Manage inventoried areas through integrated pest management following each plant's</p>	<h2>Restoration</h2> <p>Re-establish site with native trees, shrubs, and groundcovers necessary to restore healthy, ning natural munities</p>	<h2>Cooperation</h2> <p>Facilitate agreements and sustain participation by citizens, agencies, and partner organizations across jurisdictional boundaries</p>
<ol style="list-style-type: none"> <li>Continue to campaign to limit/stop the sale of invasive exotic plants                             <ul style="list-style-type: none"> <li>Develop better name for campaign</li> <li>Certify nurseries</li> <li>Educate the public</li> <li>Advocate for non-invasive seed mixes for NCDOT/Contractors                                     <ul style="list-style-type: none"> <li>Policy advocacy</li> </ul> </li> </ul> </li> <li>Evaluate impact of boot brush signs                             <ul style="list-style-type: none"> <li>Install more as needed</li> </ul> </li> <li>Establish Develop Weed-free BMPs                             <ul style="list-style-type: none"> <li>Use certified materials when feasible (gravel, mulch, fill dirt, etc.)</li> <li>Clean equipment, clothes, tools</li> <li>Limit soil disturbance</li> <li>Replant immediately after soil disturbance</li> </ul> </li> <li>Research suppliers of weed-free materials (quarries, mulch yards, etc.)                             <ul style="list-style-type: none"> <li>Promote these suppliers</li> </ul> </li> </ol>	<ol style="list-style-type: none"> <li>Determine best ve information distribu                             <ul style="list-style-type: none"> <li>Conferences</li> <li>Home and garden s</li> <li>Master gardeners</li> <li>Home owners asso</li> <li>Boy Scouts</li> <li>State Fair</li> <li>Extension Office</li> </ul> </li> <li>Develop lesson pl 12<sup>th</sup> grades                             <ul style="list-style-type: none"> <li>Train the trainers</li> <li>Provide environme education credits to</li> </ul> </li> <li>Continue to prom SACWMP in the mec                             <ul style="list-style-type: none"> <li>Website</li> <li>Enewsletters</li> <li>Press</li> <li>Radio</li> <li>Weed of the Week podcasts</li> <li>Google ads</li> </ul> </li> <li>Integrate fun/creative/recreate-on activities into volunteer events</li> </ol>	<p>Re-establish site with native trees, shrubs, and groundcovers necessary to restore healthy, functioning natural communities</p>	<p>for each project area</p> <ul style="list-style-type: none"> <li>Control methods</li> <li>Timing</li> <li>Person hours</li> <li>Equipment needs</li> <li>Safety</li> <li>Signage</li> </ul> <ol style="list-style-type: none"> <li>Conduct management cost analysis                             <ul style="list-style-type: none"> <li>Control vs. prevention</li> <li>Cost per acre/species/year</li> </ul> </li> </ol>	<p>guidelines for tive vegetation bance thresholds s. invasive cover invasive seed sources</p> <p>ver (sunlight) re idelines access of replanting other restoration</p> <p>additional sources of /free native plant</p>	<ol style="list-style-type: none"> <li>Log 750 volunteer hours per year</li> <li>Increase number of repeat volunteers every year</li> <li>Explore, develop, and retain partnerships with federal, state, non-profit, and private partners                             <ul style="list-style-type: none"> <li>Increase coordination between partners</li> <li>Recruit interns to work on SACWMP projects</li> <li>Explore the need for a MOU or Participatory Agreement</li> </ul> </li> <li>Explore pros/cons of SACWMP becoming a 501(c)(3) entity</li> <li>Pursue additional funding for SACWMP projects                             <ul style="list-style-type: none"> <li>Explore cost of funding a FT or PT program manager</li> <li>Determine resource needs</li> </ul> </li> <li>Determine geographic influence of SACWMP based on intersection of management priorities                             <ul style="list-style-type: none"> <li>Map management areas</li> </ul> </li> </ol>

# Restoration

Re-establish site with native trees, shrubs, and groundcovers necessary to restore healthy, functioning natural communities



# SACWMP Strategic Plan, January 2012

Prevention	Education	Detection	Control	Restoration	Cooperation
<p>Prevent the establishment of new species to our region as well as the spread of existing infestations</p> <ol style="list-style-type: none"> <li>Continue to campaign to limit/stop the sale of invasive exotic plants <ul style="list-style-type: none"> <li>Develop better name for campaign</li> <li>Certify nurseries</li> <li>Educate the public</li> <li>Advocate for non-invasive seed mixes for NCDOT/Contractors <ul style="list-style-type: none"> <li>Policy advocacy</li> </ul> </li> </ul> </li> <li>Evaluate impact of boot brush signs <ul style="list-style-type: none"> <li>Install more as needed</li> </ul> </li> <li>Establish Develop Weed-free BMPs <ul style="list-style-type: none"> <li>Use certified materials when feasible (gravel, mulch, fill dirt, etc.)</li> <li>Clean equipment, clothes, tools</li> <li>Limit soil disturbance</li> <li>Replant immediately after soil disturbance</li> </ul> </li> <li>Research suppliers of weed-free materials (quarries, mulch yards, etc.) <ul style="list-style-type: none"> <li>Promote these suppliers</li> </ul> </li> </ol>	<p>Increase public awareness of the impacts of invasive exotic plants and natural resource conse</p> <ol style="list-style-type: none"> <li>Determine best ve information distribu <ul style="list-style-type: none"> <li>Conferences</li> <li>Home and garden s</li> <li>Master gardeners</li> <li>Home owners asso</li> <li>Boy Scouts</li> <li>State Fair</li> <li>Extension Office</li> </ul> </li> <li>Develop lesson pl 12<sup>th</sup> grades <ul style="list-style-type: none"> <li>Train the trainers</li> <li>Provide environme education credits to</li> </ul> </li> <li>Continue to prom SACWMP in the mec <ul style="list-style-type: none"> <li>Website</li> <li>Enewsletters</li> <li>Press</li> <li>Radio</li> <li>Weed of the Week podcasts</li> <li>Google ads</li> </ul> </li> <li>Integrate fun/creative/recreate-on activities into volunteer events</li> </ol>	<p>Conduct inventories for the purposes of controlling infestations and monitoring the</p>	<p>Manage inventoried areas through integrated pest management following each plant's</p> <ol style="list-style-type: none"> <li>for each project area <ul style="list-style-type: none"> <li>Control methods</li> <li>Timing</li> <li>Person hours</li> <li>Equipment needs</li> <li>Safety</li> <li>Signage</li> </ul> </li> <li>Conduct management cost analysis <ul style="list-style-type: none"> <li>Control vs. prevention</li> <li>Cost per acre/species/year</li> </ul> </li> </ol>	<p>Re-establish site with native trees, shrubs, and groundcovers necessary to restore healthy, ning natural munities</p> <p>guidelines for tive vegetation bance thresholds s. invasive cover invasive seed sources</p> <p>ver (sunlight) re e guidelines access of replanting other restoration</p> <p>additional sources of /free native plant</p>	<p>Facilitate agreements and sustain participation by citizens, agencies, and partner organizations across jurisdictional boundaries</p> <ol style="list-style-type: none"> <li>Log 750 volunteer hours per year</li> <li>Increase number of repeat volunteers every year</li> <li>Explore, develop, and retain partnerships with federal, state, non-profit, and private partners <ul style="list-style-type: none"> <li>Increase coordination between partners</li> <li>Recruit interns to work on SACWMP projects</li> <li>Explore the need for a MOU or Participatory Agreement</li> </ul> </li> <li>Explore pros/cons of SACWMP becoming a 501(c)(3) entity</li> <li>Pursue additional funding for SACWMP projects <ul style="list-style-type: none"> <li>Explore cost of funding a FT or PT program manager</li> <li>Determine resource needs</li> </ul> </li> <li>Determine geographic influence of SACWMP based on intersection of management priorities <ul style="list-style-type: none"> <li>Map management areas</li> </ul> </li> </ol>
<h2>Cooperation</h2> <h3>Facilitate agreements and sustain participation by citizens, agencies, and partner organizations across jurisdictional boundaries</h3>					

# Cooperation

Facilitate agreements and sustain participation by citizens, agencies, and partner organizations across jurisdictional boundaries



## 2010-2011 Accomplishments

- Trained **254** volunteers on invasive plant identification and control who contributed **1,463** volunteer work hours
- Completed **33** miles of inventory along the A.T. and adjacent roads
- Controlled approximately **17.25** acres of invasive plant infestations
- Conducted **28** educational workshops
- Engaged **7** federal, state, and non-profit partners



[www.sacwmp.org](http://www.sacwmp.org)

Lindsay Majer

[Lindsay@equinoxenvironmental.com](mailto:Lindsay@equinoxenvironmental.com)

828-253-6856